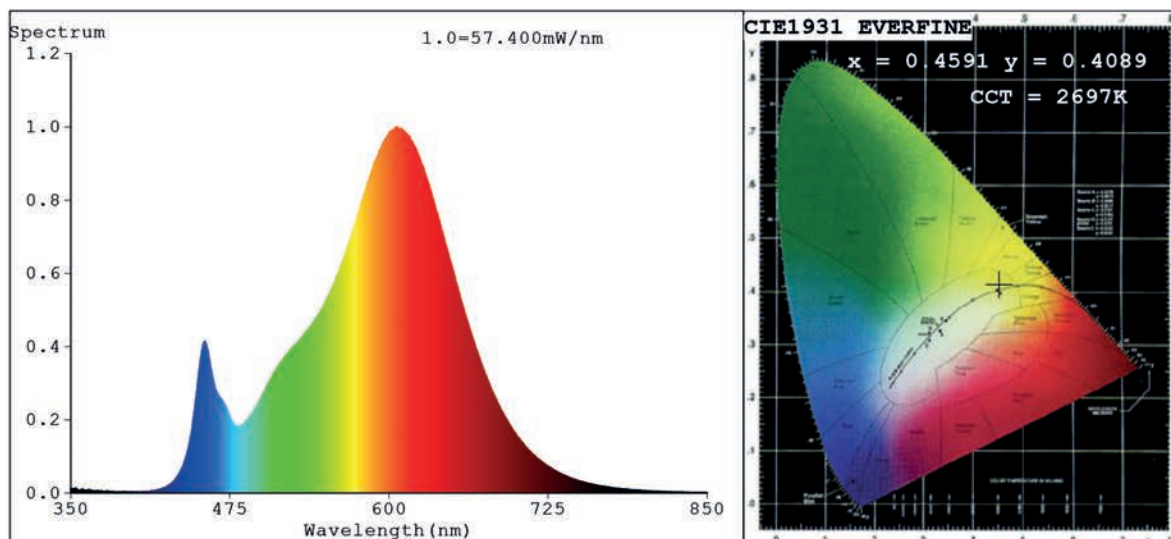


## Spectrum Test Report



### Color Parameters:

Chromaticity Coordinate:  $x=0.4591$   $y=0.4089$   $u'=0.2628$   $v'=0.5266$   
 CCT=2697K (Duv=-0.0006) Dominant WL:Ld =584.4nm Purity=60.6%  
 Ratio:R=25.3% G=72.3% B=2.4%; Peak WL:Lp=606.9nm FWHM=112.5nm  
 Render Index:Ra=82.5 CRI=78.0 TM30:Rf=82 Rg=95  
 R1 =82 R2 =93 R3 =93 R4 =79 R5 =82 R6 =93 R7 =80  
 R8 =57 R9 =9 R10=85 R11=79 R12=76 R13=85 R14=97 R15=74

### Photo Parameters:

Flux = 2583 lm Eff. : 121.17 lm/W Fe = 8.031 W

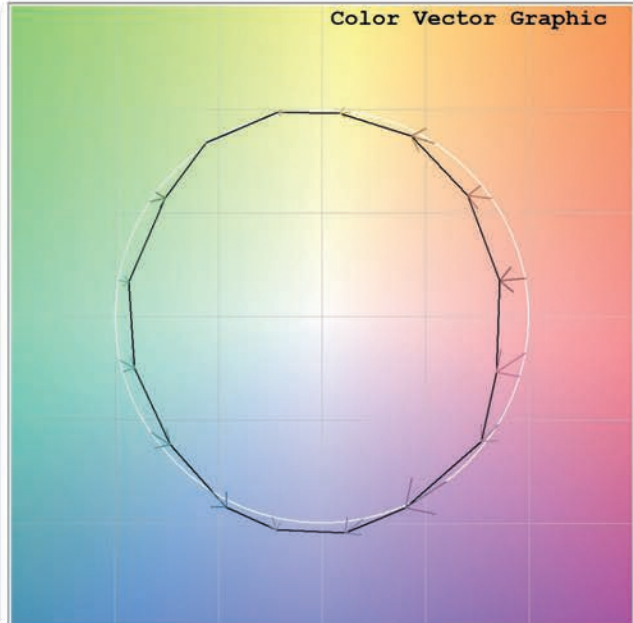
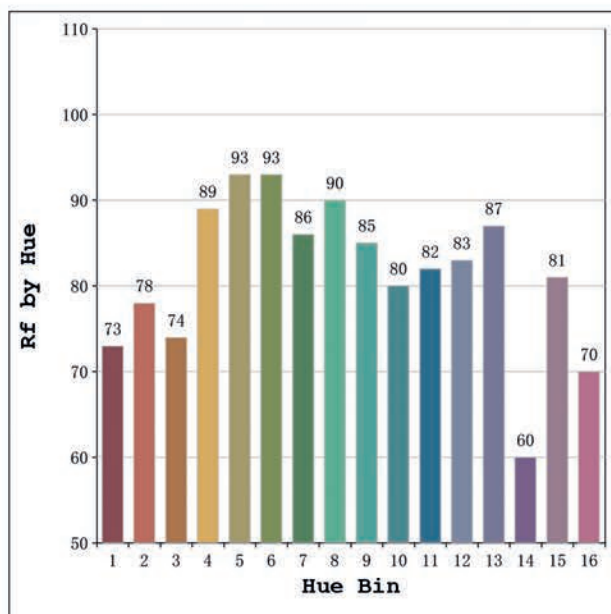
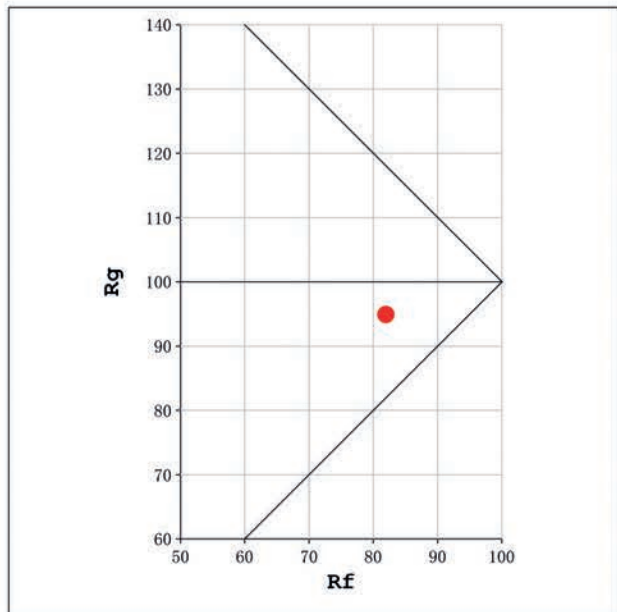
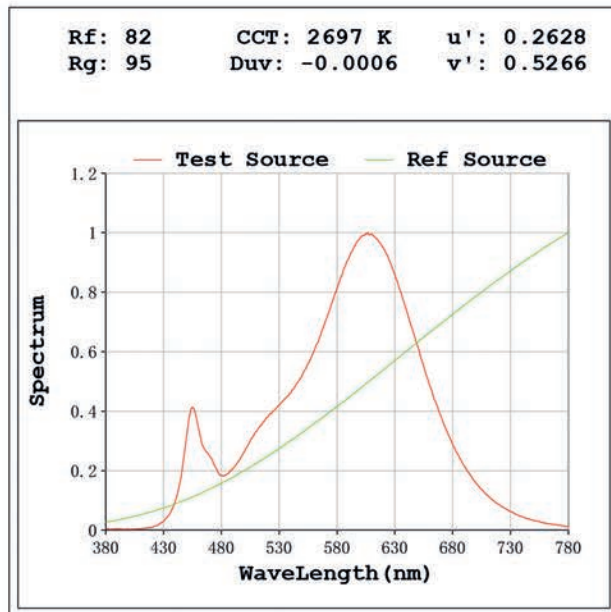
### Electrical parameters:

V = 23.998 V I = 0.8883 A P = 21.32 W PF = 1.000

Status: Integral T = 441 ms Ip = 49743 (76%)

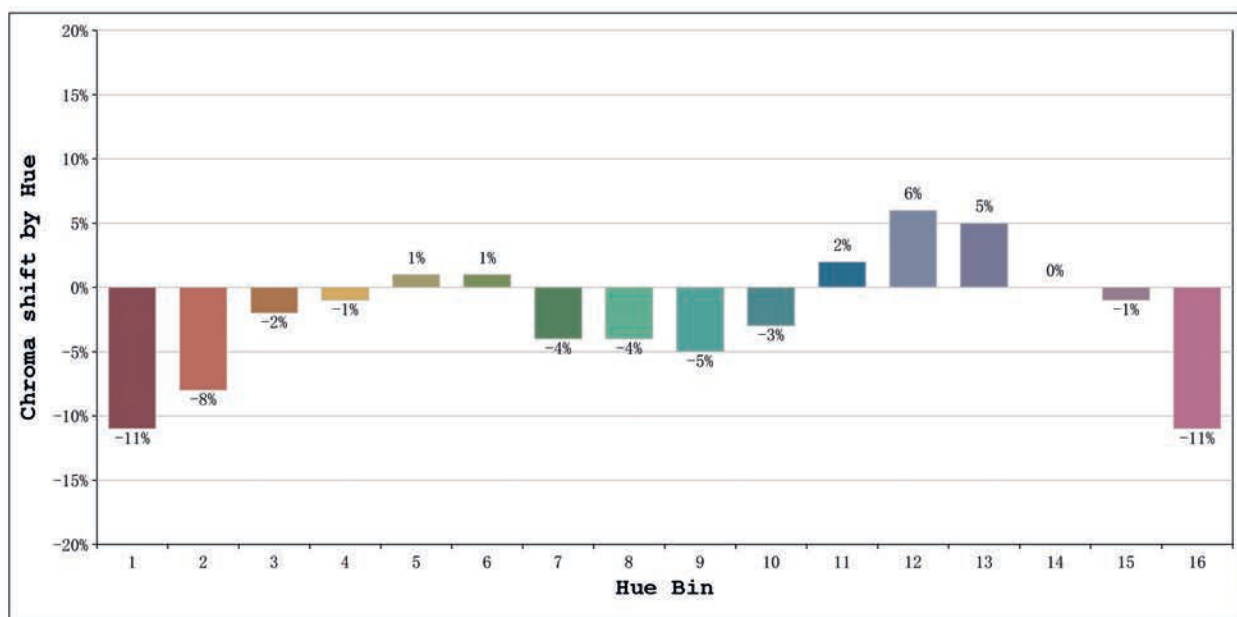
Model:Ecoled Elite 20 2700K  
 Tester:MªAngeles  
 Temperature:25Deg  
 Manufacturer:Luz Negra

Number: 31.216  
 Date:2025-06-02 09:01:42  
 Humidity:40%  
 Remarks:100cm tira flexible



Model:Ecoled Elite 20 2700K  
 Tester:Mª Angeles  
 Temperature:25Deg  
 Manufacturer:Luz Negra

Number: 31.216  
 Date:2025-06-02 09:01:42  
 Humidity:40%  
 Remarks:100cm tira flexible



			Graphic shift(%)	
Hue Bin	Hue Angle	Rf	Chroma	Hue
1	0.0° - 22.5°	73	-11	1
2	22.5° - 45.0°	78	-8	8
3	45.0° - 67.5°	74	-2	11
4	67.5° - 90.0°	89	-1	5
5	90.0° - 112.5°	93	1	3
6	112.5° - 135.0°	93	1	0
7	135.0° - 157.5°	86	-4	-5
8	157.5° - 180.0°	90	-4	0
9	180.0° - 202.5°	85	-5	5
10	202.5° - 225.0°	80	-3	10
11	225.0° - 247.5°	82	2	11
12	247.5° - 270.0°	83	6	3
13	270.0° - 292.5°	87	5	-9
14	292.5° - 315.0°	60	0	-22
15	315.0° - 337.5°	81	-1	-10
16	337.5° - 360.0°	70	-11	-11

Model:Ecoled Elite 20 2700K  
Tester:Mª Angeles  
Temperature:25Deg  
Manufacturer:Luz Negra

Number: 31.216  
Date:2025-06-02 09:01:42  
Humidity:40%  
Remarks:100cm tira flexible